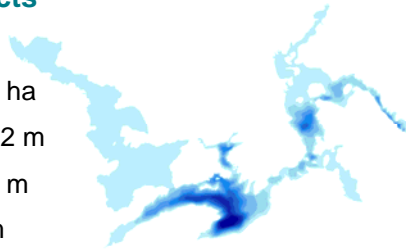


# Broad-scale Monitoring Bulletin

## BAPTISTE LAKE – ZONE 15

### Baptiste Lake Facts

County: Hastings  
 Surface Area: 2154 ha  
 Maximum Depth: 32 m  
 Average Depth: 4.7 m  
 Water Clarity: 4.6 m



### Monitoring Activities

- ✓ Fish netting
- ✓ Fish contaminants
- ✓ Zooplankton
- ✓ Water chemistry
- ✓ Bathymetry
- ✓ Water temperature/dissolved oxygen
- ✓ Invasive Species



### Netting Summary

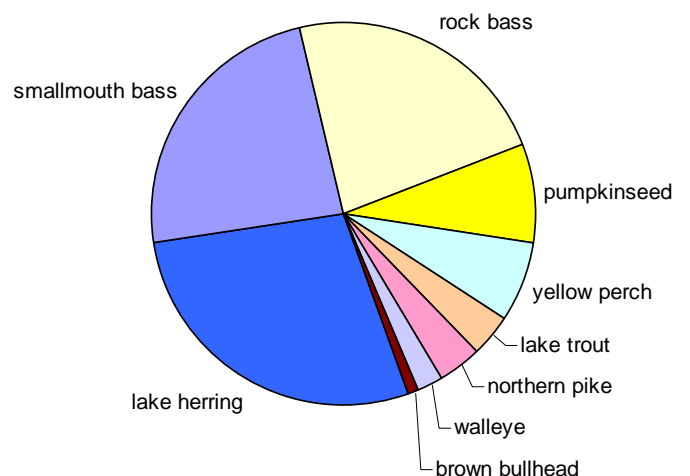
Netting dates: August 2 – 11, 2011  
 Netting days: 6  
 Number of net sets: 38  
 Number of fish species caught: 14

### Fish Netting Results

Fish populations were surveyed using large and small mesh nets to provide information on fish species present and their characteristics, such as growth, age and abundance. The catch data below show that 9 species (from a total of 135 fish) were surveyed in large mesh nets. Additional fish species that were caught in small mesh nets are black crappie, bluegill, common shiner, golden shiner and largemouth bass.

Fish species	Total Catch %	Maximum Length cm	Minimum Length cm	Average Length cm
lake herring	28	29.0	18.0	24.8
smallmouth bass				
bass	24	48.6	21.0	32.3
rock bass	23	24.2	10.2	18.2
pumpkinseed	8	24.5	13.9	19.7
yellow perch	7	22.5	14.9	17.8
lake trout	4	69.0	50.8	59.8
northern pike	4	89.5	34.8	57.8
walleye	2	58.3	27.3	45.5
brown bullhead	1	26.7	26.7	26.7

### Proportion of Fish Caught in Large Mesh Nets

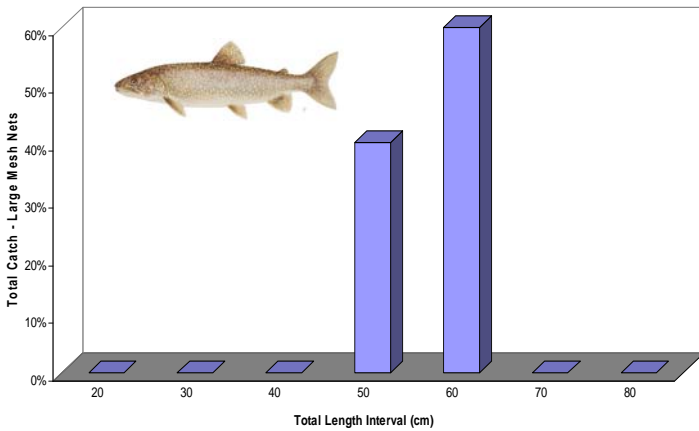


### About the Program

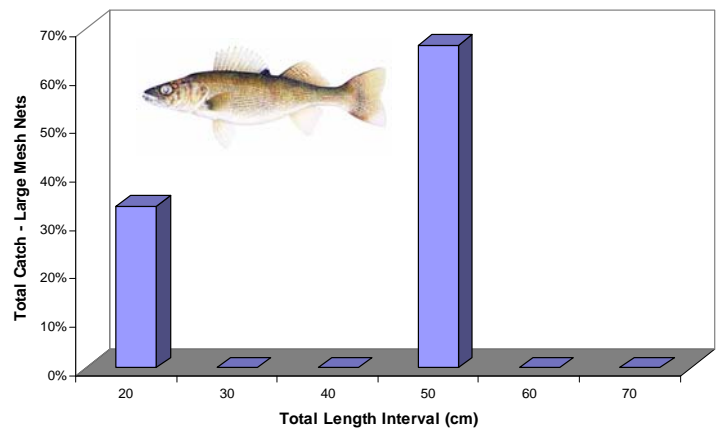
The Broad-scale Monitoring Program provides information for managing our fisheries effectively. This bulletin provides a **snapshot of the recent monitoring activities and netting results**. Netting is conducted using large and small mesh nets. Large mesh nets contribute information about fish species and small mesh nets describe the fish community. To learn more about the sampling program read *Broad-scale Monitoring Program: Monitoring the Health of Ontario Inland Lakes* or visit [ontario.ca/fishing](http://ontario.ca/fishing).

[ontario.ca/fishing](http://ontario.ca/fishing)

### Length Distribution of Lake Trout



### Length Distribution of Walleye



20 cm = 20 to 30 cm, 30 cm = 30 to 40 cm, etc.

The size of lake trout ranged from 51 to 69 cm (from a total of 5 fish) and the size of walleye ranged from 27 to 58 cm (from a total of 3 fish).

### Water Chemistry and Temperature

Water samples were collected in May 2011 and sent to the Ministry of Environment for analysis. Water temperature, oxygen levels and water transparency were measured in August 2011. Baptiste Lake is considered a cold-water lake that can support cold and cool-water fish species such as lake trout, walleye, and lake herring.

### Invasive Species

Invasive species were monitored using plankton nets and observations made by field crews. Historically, there have been no reported occurrences of invasive species in Baptiste Lake. Samples are currently being processed to determine if any new invasive species were detected through this sampling program. Any species new to Ontario or an invasive species that is a new record for a waterbody is reported to the Invading Species Hotline [www.invadingspecies.com](http://www.invadingspecies.com).

### Fish Contaminants

Levels of contaminants in fish flesh (e.g. mercury, PCB's, mirex, organochlorine pesticides and other organic chemicals) will be reported in the *Guide to Eating Sport Fishing in Ontario* or visit [ontario.ca/fishguide](http://ontario.ca/fishguide).

For more information please contact Ministry of Natural Resources at 1-800-667-1940, send an email to [mnr.nric.mnr@ontario.ca](mailto:mnr.nric.mnr@ontario.ca) or visit [ontario.ca/fishing](http://ontario.ca/fishing).